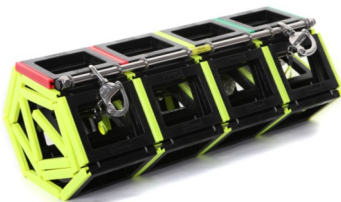


Brochure

February 2014



+44 (0)1202 874365
www.jasonscradle.co.uk

Manufactured by: Land & Marine Products Ltd

9-10 Redfields Business Park, Church Crookham, Fleet, Hampshire. GU52 0RD. E – info@jasonscradle.co.uk

The Jason's Cradle® MOB systems

Who uses it?

The Jason's Cradle® MOB system is used globally in every military, commercial, rescue, and leisure area within the marine sector. The commercial units are fully SOLAS approved and for many years have been and continue to be the most respected MOB recovery, embarkation/disembarkation and evacuation system in the world.



Why do I need it?

Jason's Cradle® is designed to retrieve people quickly and horizontally from the water, thus reducing the possibilities of “dry drowning” now more commonly known as Circum Rescue Collapse.

The horizontal lift for a MOB has now become critical in the modern marine world and by using the Jason's Cradle®, not only is this achievable, but it is one of the safest and quickest methods of retrieval for conscious and / or unconscious casualties.

Using Jason's Cradle® as your preferred MOB recovery system allows operators to retrieve casualties who are unable to assist themselves due to injury, or high freeboard.

How do I determine the type & size of Jason's Cradle® to suit my vessel?

The **Standard** unit is suitable for most vessels with up to 4.5m freeboard and is offered in three width options.

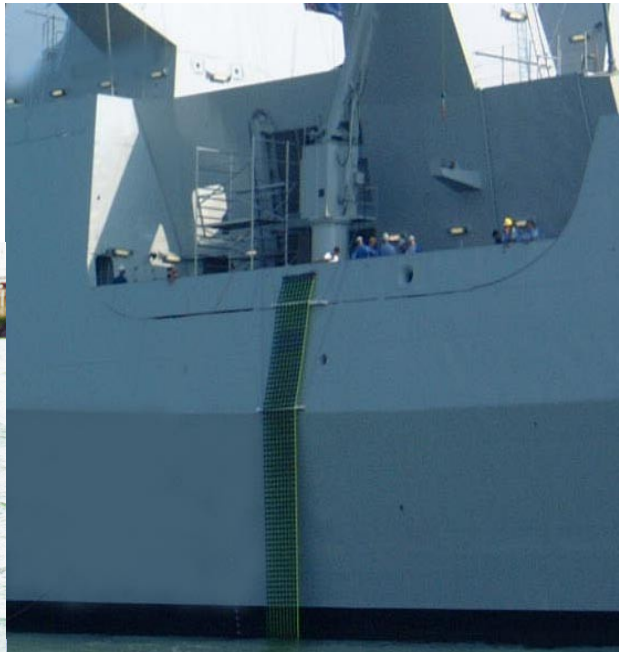
The **FRC Kit** is suitable for all Fast Rescue Craft and is offered in two width options

The **Stretcher** unit is suitable for high sided vessels, diver recovery and quayside rescue and is offered in two sizes

The **Scramble Net** is suitable for high sided vessels, rescue zones and mass recovery/evacuation

Our **Bespoke Service** offers the flexibility to meet all your requirements by tailoring the Jason's Cradle® system to suit any vessel where the dimensions are outside the above provision of stock units

Bespoke Services



Bespoke Services

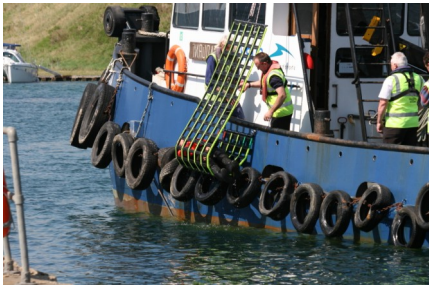
We can provide an MOB solution to meet your individual needs.

The unique design of the Jason's Cradle® MOB system enables it to be customised and manufactured to suit almost every application requirement.

Contact our technical department for further assistance and advice

technicalsupport@jasonscradle.co.uk

The Commercial Jason's Cradle® MOB Recovery Units



Jason's Cradle® - Standard Unit Offered in 3 Widths
The standard unit is suitable for most vessels with up to 4.5m freeboard. The unit comes complete with clips, strop, and hauling lines. Available in other lengths through our bespoke service.



Jason's Cradle® - Scramble Net Offered in 6 Widths
The scramble net unit is suitable for most vessels with up to 4.5m freeboard. The unit comes complete with clips, and hauling lines. Available in other lengths through our bespoke service.



FRC Kits	Length	Width
1MC-JCFRC003	2000mm	530mm For Craft Length <5m
1MC-JCFRC004	2140mm	710mm For Craft Length >5m

Jason's Cradle® - FRC Kit
The FRC kit is offered in two width options and comes complete with clips, strop, two pairs of Hypalon D ring patches



Stretchers	Length	Width
1MC-JCSTR009	1580mm	1150mm
1MC-JCSTR011	1940mm	1430mm

Jason's Cradle® - Stretcher
The stretcher unit is offered in two sizes and comes complete with flotation tubes, lifting strops & stowage bag.

Need help choosing?

Cannot see the size you need here?

Contact us for advice and a quotation info@jasonscradle.co.uk

The unique design of the Jason's Cradle means it can be customised and manufactured to suit most applications.

Length	Width									
	710mm	880mm	1050mm	1240mm	1410mm	1580mm	1780mm	1940mm	2100mm	
2290mm Suitable for Up to 1m Freeboard	1MC-JCSTD04A	1MC-JCSTD05A	1MC-JCSTD06A	1MC-JCSCN07A	1MC-JCSCN08A	1MC-JCSCN09A	1MC-JCSCN10A	1MC-JCSCN11A	1MC-JCSCN12A	
2860mm Suitable for 1m to 1.5m Freeboard	1MC-JCSTD04B	1MC-JCSTD05B	1MC-JCSTD06B	1MC-JCSCN07B	1MC-JCSCN08B	1MC-JCSCN09B	1MC-JCSCN10B	1MC-JCSCN11B	1MC-JCSCN12B	
3430mm Suitable for 1.5m to 2m Freeboard	1MC-JCSTD04C	1MC-JCSTD05C	1MC-JCSTD06C	1MC-JCSCN07C	1MC-JCSCN08C	1MC-JCSCN09C	1MC-JCSCN10C	1MC-JCSCN11C	1MC-JCSCN12C	
4000mm Suitable for 2m to 2.5m Freeboard	1MC-JCSTD04D	1MC-JCSTD05D	1MC-JCSTD06D	1MC-JCSCN07D	1MC-JCSCN08D	1MC-JCSCN09D	1MC-JCSCN10D	1MC-JCSCN11D	1MC-JCSCN12D	
4570mm Suitable for 2.5m to 3m Freeboard	1MC-JCSTD04E	1MC-JCSTD05E	1MC-JCSTD06E	1MC-JCSCN07E	1MC-JCSCN08E	1MC-JCSCN09E	1MC-JCSCN10E	1MC-JCSCN11E	1MC-JCSCN12E	
5140mm Suitable for 3m to 3.5m Freeboard	1MC-JCSTD04F	1MC-JCSTD05F	1MC-JCSTD06F	1MC-JCSCN07F	1MC-JCSCN08F	1MC-JCSCN09F	1MC-JCSCN10F	1MC-JCSCN11F	1MC-JCSCN12F	
5710mm Suitable for 3.5m to 4m Freeboard	1MC-JCSTD04G	1MC-JCSTD05G	1MC-JCSTD06G	1MC-JCSCN07G	1MC-JCSCN08G	1MC-JCSCN09G	1MC-JCSCN10G	1MC-JCSCN11G	1MC-JCSCN12G	
6290mm Suitable for 4m to 4.5m Freeboard	1MC-JCSTD04H	1MC-JCSTD05H	1MC-JCSTD06H	1MC-JCSCN07H	1MC-JCSCN08H	1MC-JCSCN09H	1MC-JCSCN10H	1MC-JCSCN11H	1MC-JCSCN12H	

Prices exclude VAT and delivery charge.

Commercial Jason's Cradle units are SOLAS approved and guaranteed against manufacturing defect for three years

The Jason's Cradle® MOB systems



Offshore Standby Vessel - United Kingdom



Type 23 Frigate - British Royal Navy, United Kingdom



Tug Boat - Quebec, Canada



CCGS Ile Rouge - Quebec, Canada



Hong Kong Fire Service Command Boat — Hong Kong



Pilot Boat—Shoreham Port - United Kingdom

The Jason's Cradle® MOB systems



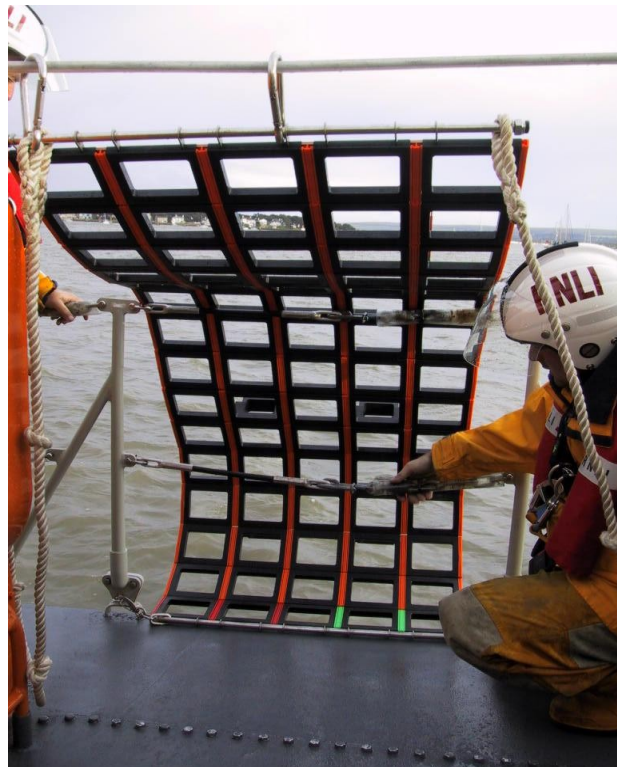
Salvamento Maritimo — Barcelona, Spain.



Maritime Agency — Bulgaria.



Diver Rescue — Germany



Royal National Lifeboat Institution (RNLI) - United Kingdom

Bespoke Services

We can provide an MOB solution to meet your individual needs.

The unique design of the Jason's Cradle® MOB system enables it to be customised and manufactured to suit almost every application requirement.

Contact our technical department for further assistance and advice

technicalsupport@jasonscradle.co.uk



Jason's Cradle® is fully SOLAS approved and guaranteed against manufacturing defect for three years, excluding clips, strops, hauling lines, stowage bags and other additional fittings that carry the usual 1 year manufacturer's warranty. Once the product is older than 3 years, it is important that it is serviced annually by Land and Marine's authorised service centres in order to maintain its high quality standards. If it is serviced, modified or altered in any way by the owner/operator or another non-approved body, Land and Marine disclaim all and any liability for any failure of the product to operate correctly or other problems or defects with the product except for liability which cannot be excluded by law.